

SAINT VINCENT COLLEGE FACT BOOK HIGHLIGHTS 2018-2019

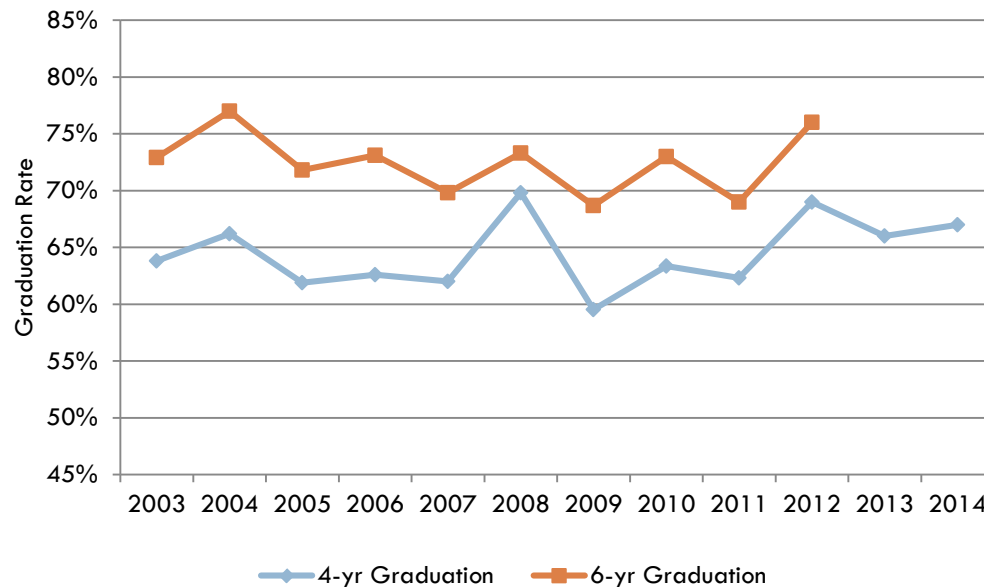
RETENTION

The entering Fall 2017 cohort retention rate at sophomore year is 82%. This is based on the number of first-time, full-time students who entered in Fall 2017 and were still enrolled at census date in Fall 2018. The ten-year freshmen-to-sophomore retention rate average is 83.56%

	2008	2009	2010	2011	2012	2013	2014	2015	2016	2017
Fall Cohort	%	%	%	%	%	%	%	%	%	%
FR to SO Retention Rate	85.7	81.0	84.0	80.2	85.0	81.6	87.1	82.7	86.3	82.0

GRADUATION

Graduation Rates of First-time, First-Year Cohorts (Full-time)



The Fall 2014 first-time, first-year cohort had a four-year graduation rate of 67%.

The Fall 2012 first-time, first-year cohort had a six-year graduation rate of 76%.

From July 1, 2017 to June 30, 2018, the unduplicated headcount of degrees conferred was: 362 at undergraduate level, 59 at the master's level and 4 at the doctoral level.

View Saint Vincent College Post-Graduation Outcomes Survey results:

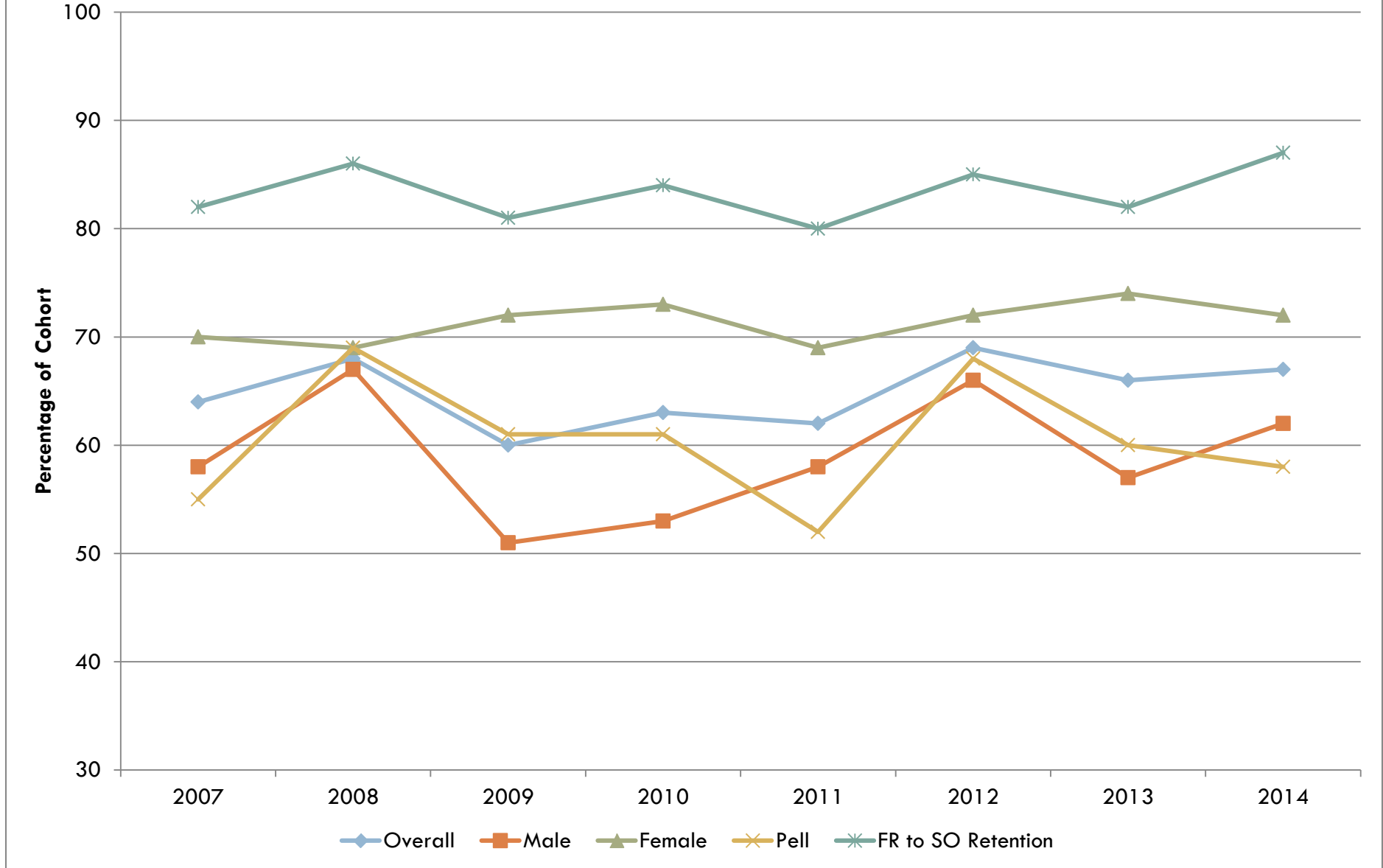
<http://www.stvincent.edu/about/success-statistics>

GRADUATION

First-time, First-year Cohort	2006 %	2007 %	2008 %	2009 %	2010 %	2011 %	2012 %	2013 %	2014 %
4-year Graduation Rate	62.6	64.0	67.7	59.5	63.4	62.3	68.7	65.8	66.5
6-year Graduation Rate	73.1	69.8	73.5	68.7	72.7	69.2	76.7		

	2007			2008			2009			2010			2011			2012		
	M	F	All	M	F	All	M	F	All	M	F	All	M	F	All	M	F	All
First-time, first-year cohort (N)	223	200	423	251	195	446	249	198	447	222	203	424	243	166	409	173	166	339
4-year Grad Rate %	58%	70%	64%	67%	69%	68%	51%	72%	60%	53%	73%	63%	58%	69%	62%	66%	72%	69%
6-year Grad Rate %	67%	74%	70%	75%	72%	74%	63%	76%	69%	67%	79%	73%	65%	75%	69%	77%	76%	77%
Pell Grant (N)	57	48	105	57	58	115	54	53	107	72	86	158	77	45	122	59	54	113
4-year Graduation %	47%	65%	55%	68%	71%	69%	57%	64%	61%	50%	71%	61%	42%	73%	52%	66%	70%	68%
6-year Graduation %	58%	71%	64%	79%	76%	77%	67%	68%	67%	63%	77%	71%	53%	73%	61%	69%	65%	67%

4-year Graduation Rate, First-time, First-year Cohorts



6-year Graduation Rate, First-time, First-year Cohorts

