

SAINT VINCENT COLLEGE FACT BOOK HIGHLIGHTS 2019-2020

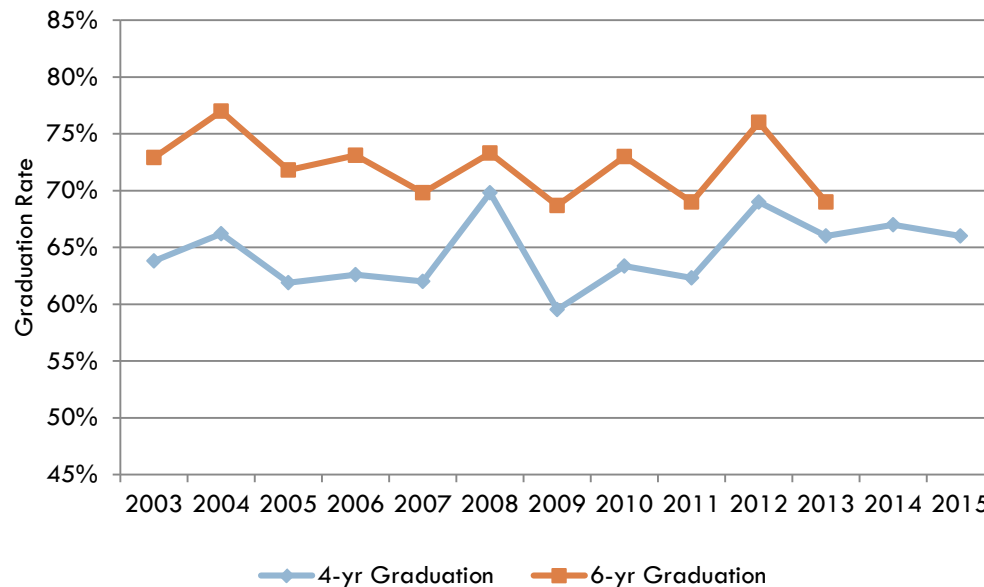
RETENTION

The entering Fall 2018 cohort retention rate at sophomore year is 81%. This is based on the number of first-time, full-time students who entered in Fall 2018 and were still enrolled at census date in Fall 2019. The ten-year freshmen-to-sophomore retention rate average is 83.1%

	2009	2010	2011	2012	2013	2014	2015	2016	2017	2018
Fall Cohort	%	%	%	%	%	%	%	%	%	%
FR to SO Retention Rate	81.0	84.0	80.2	85.0	81.6	87.1	82.7	86.3	82.0	81.1

GRADUATION

Graduation Rates of First-time, First-Year Cohorts (Full-time)



The Fall 2015 first-time, first-year cohort had a four-year graduation rate of 66%.

The Fall 2013 first-time, first-year cohort had a six-year graduation rate of 69%.

From July 1, 2018 to June 30, 2019, the unduplicated headcount of degrees conferred was: 373 at undergraduate level, 95 at the master's level and 3 at the doctoral level.

View Saint Vincent College Post-Graduation Outcomes Survey results:

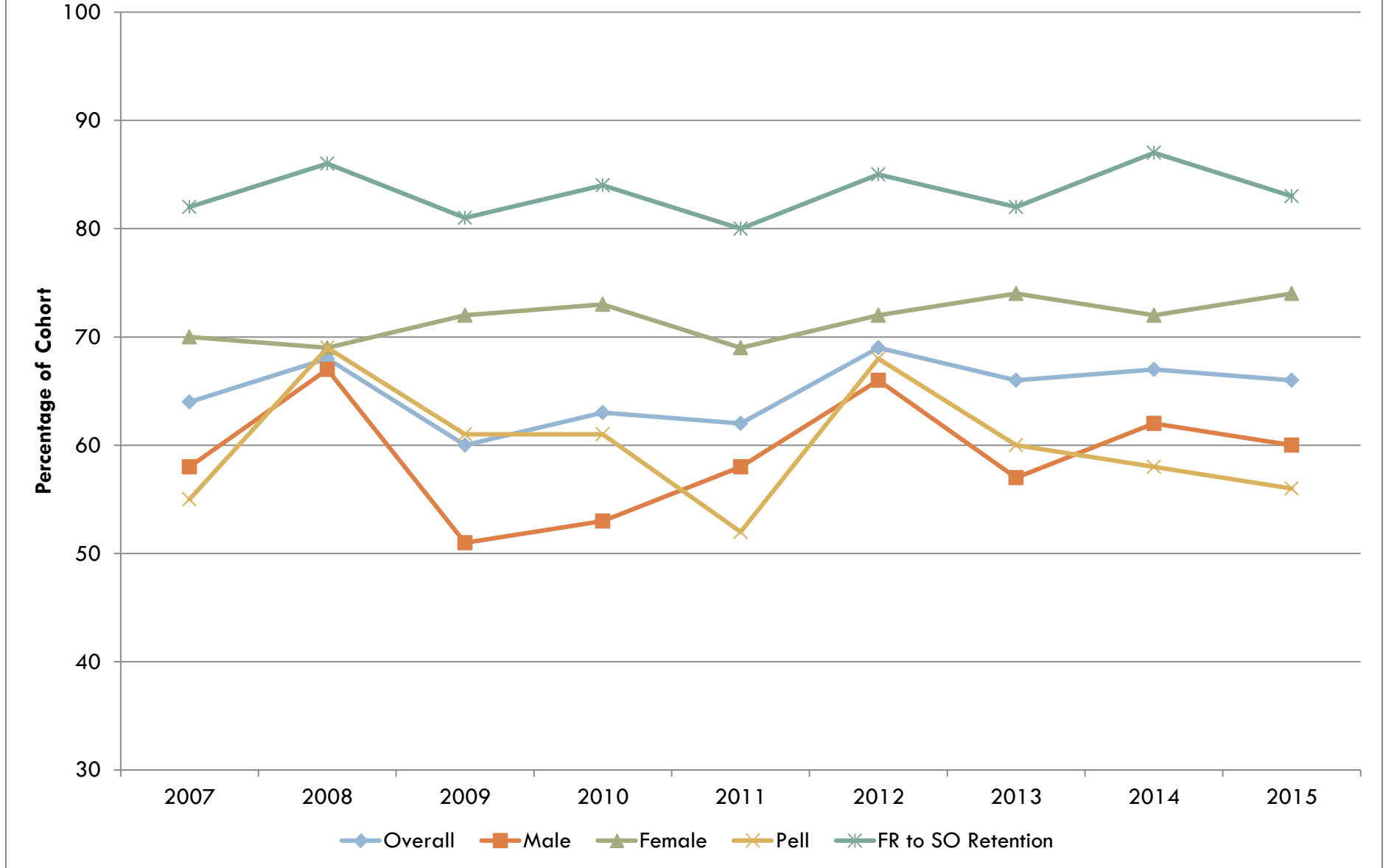
<http://www.stvincent.edu/about/success-statistics> .

GRADUATION

First-time, First-year Cohort	2007 %	2008 %	2009 %	2010 %	2011 %	2012 %	2013 %	2014 %	2015 %
4-year Graduation Rate	64.0	67.7	59.5	63.4	62.3	68.7	65.8	66.5	66.2
6-year Graduation Rate	69.8	73.5	68.7	72.7	69.2	76.7	69.4		

	2008			2009			2010			2011			2012			2013		
	M	F	All	M	F	All	M	F	All	M	F	All	M	F	All	M	F	All
First-time, first-year cohort (N)	251	195	446	249	198	447	222	203	424	243	166	409	173	166	339	234	238	472
4-year Grad Rate %	67%	69%	68%	51%	72%	60%	53%	73%	63%	58%	69%	62%	66%	72%	69%	57%	74%	66%
6-year Grad Rate %	75%	72%	74%	63%	76%	69%	67%	79%	73%	65%	75%	69%	77%	76%	77%	62%	76%	69%
Pell Grant (N)	57	58	115	54	53	107	72	86	158	77	45	122	59	54	113	54	68	122
4-year Graduation %	68%	71%	69%	57%	64%	61%	50%	71%	61%	42%	73%	52%	66%	70%	68%	43%	71%	58%
6-year Graduation %	79%	76%	77%	67%	68%	67%	63%	77%	71%	53%	73%	61%	69%	65%	67%	48%	75%	63%

4-year Graduation Rate, First-time, First-year Cohorts



6-year Graduation Rate, First-time, First-year Cohorts

